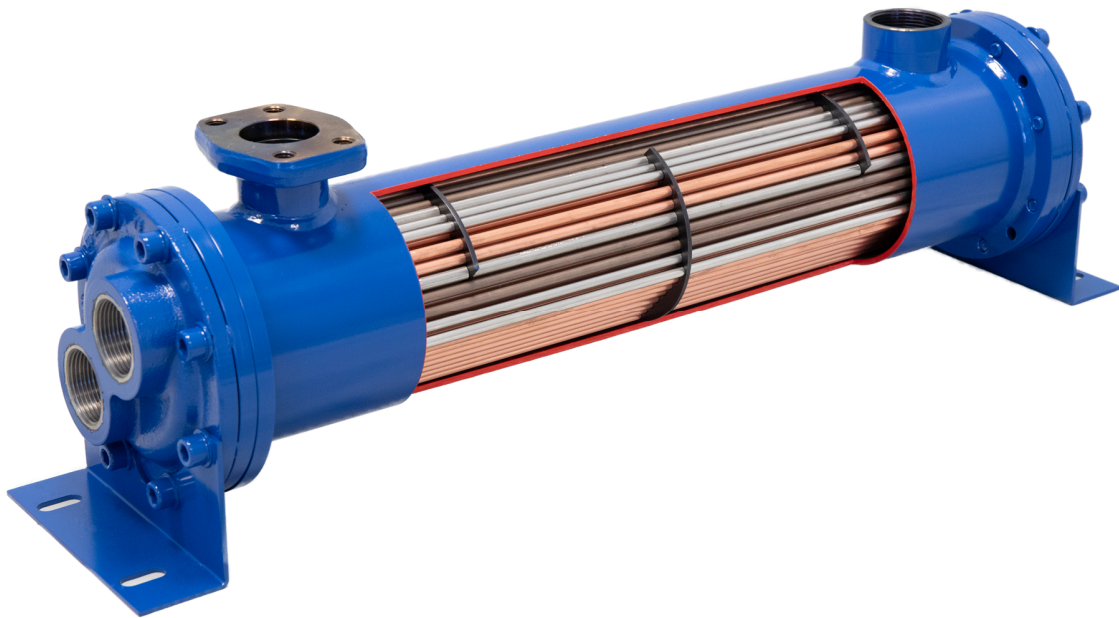


advanced quality
customized designs
made in europe and usa

**UNIVERSAL
HYDRAULIK**®
Your Partner for coolers and systems

**STANDARD
COOLING**

Heat Exchanger Series CKM



- Compact tube-bundle for an efficient heat transfer
- Tube side (water): long service life, easy to clean
- Tube side (Water): various material options: for example CU /CN /TI /SS
- Heat capacity up to 2682.2 hp
- Flow rates up to 1453 gpm
- Also available as failsafe heat exchanger



Product description

The heat exchangers of the CKM series are based on the classic tube bundle heat exchanger with smooth, bundled tube stacks. Due to the integrated baffles, the medium on the shell side are guided through the heat exchanger in a forced flow, thus optimizing the efficiency of the heat exchange between the cold and warm medium.

Removable end caps allow easy cleaning of the water side. The heat exchangers of the CKM series are available in several sizes and can be equipped with different water flow variants.

Product features

- Heat output up to 2682.2 hp
- Shell side (Oil): Flow rates up to 1453 gpm
- Removable end caps for easy cleaning of the tubes
- Max. pressure: shell (oil) 290 psi / tubes (water) 232 psi (high pressure on demand)
- High-quality materials
- Tested five times during production

Options

- Sea water resistant version
- Certifications of marine applications: Bureau Veritas, ABS, DNVGL, Rina, CSS, TL, PRS, NKK and others
- Stainless steel version or chemically nickel plated
- 3.1 certification on request
- Hydrotest on request
- ATEX-certification on request
- ASME-certification on request
- Titanium parts
- Fail-safe-versions

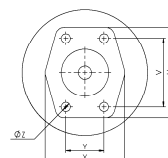
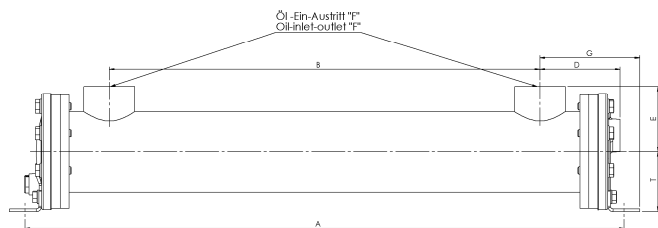
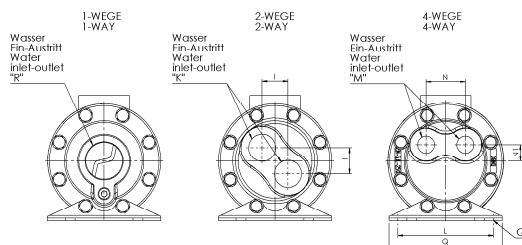
Materials

	Standard	Option	Seawater Standard
Shell Mounting Baffels	Steel	Stainless steel (SS)	
Tube sheet	Steel	Stainless steel (SS)	Brass (W)
Tubes	CuNi 90/10 (CN)	Stainless steel (SS) / Copper (CU)	Titan (TI) or Copper-nickel (CN)
End caps	Cast iron	Stainless steel (SS)	Cast iron: chem. nickel plated (SW) or gun metal with zinc anode (SWBZ)

Unit dimensions CKM-700-Series

Typ	A	B	D	E	F	G	I	K	L	M	N	N1	O	Q	R	T
CKM-708-O	10.4	3.0	4.0	2.9	SAE#24	3.7	-	-	3.0	-	-	-	5.0	Ø0.43x0.91	1 1/4" NPT	2.6
CKM-714-O	16.5	9.0	4.0	2.9	SAE#24	3.7	-	-	3.0	-	-	-	5.0	Ø0.43x0.91	1 1/4" NPT	2.6
CKM-718-O	20.4	13.0	4.0	2.9	SAE#24	3.7	-	-	3.0	-	-	-	5.0	Ø0.43x0.91	1 1/4" NPT	2.6
CKM-724-O	26.5	19.0	4.0	2.9	SAE#24	3.7	-	-	3.0	-	-	-	5.0	Ø0.43x0.91	1 1/4" NPT	2.6
CKM-736-O	38.4	31.0	4.0	2.9	SAE#24	3.7	-	-	3.0	-	-	-	5.0	Ø0.43x0.91	1 1/4" NPT	2.6
Typ	A	B	D	E	F	G	I	K	L	M	N	N1	O	Q	R	T
CKM-708-T	10.4	3.0	4.0	2.9	SAE#24	3.7	1.1	1" NPT	3.0	-	-	-	5.0	Ø0.43x0.91	-	2.6
CKM-714-T	16.5	9.0	3.5	2.9	SAE#24	3.7	1.1	1" NPT	3.0	-	-	-	5.0	Ø0.43x0.91	-	2.6
CKM-718-T	20.4	13.0	3.5	2.9	SAE#24	3.7	1.1	1" NPT	3.0	-	-	-	5.0	Ø0.43x0.91	-	2.6
CKM-724-T	26.5	19.0	3.5	2.9	SAE#24	3.7	1.1	1" NPT	3.0	-	-	-	5.0	Ø0.43x0.91	-	2.6
CKM-736-T	38.4	31.0	3.5	2.9	SAE#24	3.7	1.1	1" NPT	3.0	-	-	-	5.0	Ø0.43x0.91	-	2.6
Typ	A	B	D	E	F	G	I	K	L	M	N	N1	O	Q	R	T
CKM-708-F	10.4	3.0	4.0	2.9	SAE#24	3.7	-	-	3.0	1/2" NPT	1.7	0.7	5.0	Ø0.43x0.91	-	2.6
CKM-714-F	16.5	9.0	3.5	2.9	SAE#24	3.7	-	-	3.0	1/2" NPT	1.7	0.7	5.0	Ø0.43x0.91	-	2.6
CKM-718-F	20.4	13.0	3.5	2.9	SAE#24	3.7	-	-	3.0	1/2" NPT	1.7	0.7	5.0	Ø0.43x0.91	-	2.6
CKM-724-F	26.5	19.0	3.5	2.9	SAE#24	3.7	-	-	3.0	1/2" NPT	1.7	0.7	5.0	Ø0.43x0.91	-	2.6
CKM-736-F	38.4	31.0	3.5	2.9	SAE#24	3.7	-	-	3.0	1/2" NPT	1.7	0.7	5.0	Ø0.43x0.91	-	2.6

All dimension in inch

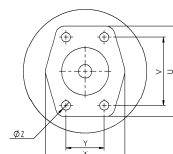
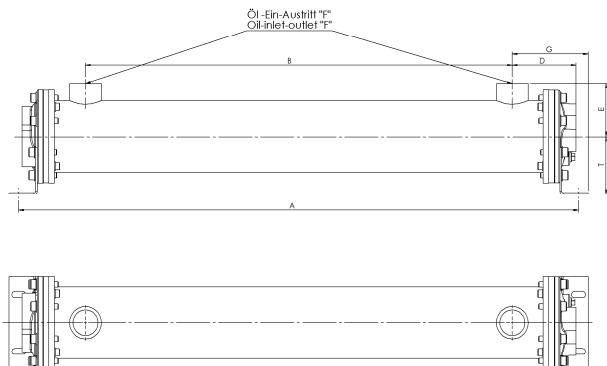
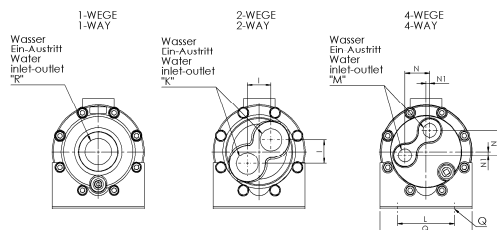


	U	V	X	Y	Z
1 1/2	3.66	2.75	3.11	1.41	1/2"-13 UNC
2	4.02	3.06	3.54	1.69	1/2"-13 UNC
2 1/2	4.49	3.5	4.13	2	1/2"-13 UNC
3	5.31	4.19	5.14	2.44	5/8"-11 UNC

Unit dimensions CKM-1000-Series

Typ	A	B	D	E	F	G	I	K	L	M	N	N1	O	Q	R	T
CKM-1014-O	17.6	8.2	4.6	3.6	SAE#24	4.7	-	-	4.0	-	-	-	6.5	∅0.43x0.98	1 1/2" NPT	4.1
CKM-1024-O	27.6	18.2	4.6	3.6	SAE#24	4.7	-	-	4.0	-	-	-	6.5	∅0.43x0.98	1 1/2" NPT	4.1
CKM-1036-O	39.6	30.2	4.6	3.7	SAE#24	4.7	-	-	4.0	-	-	-	6.5	∅0.43x0.98	1 1/2" NPT	4.1
CKM-1048-O	51.4	42.0	4.6	3.7	SAE#24	4.7	-	-	4.0	-	-	-	6.5	∅0.43x0.98	1 1/2" NPT	4.1
CKM-1060-O	63.5	54.0	4.6	3.6	SAE#24	4.7	-	-	4.0	-	-	-	6.5	∅0.43x0.98	1 1/2" NPT	4.1
Typ	A	B	D	E	F	G	I	K	L	M	N	N1	O	Q	R	T
CKM-1014-T	17.6	8.2	4.6	3.6	SAE#24	4.7	1.7	1 1/4" NPT	4.0	-	-	-	6.5	∅0.43x0.98	-	4.1
CKM-1024-T	27.6	18.2	4.6	3.6	SAE#24	4.7	1.7	1 1/4" NPT	4.0	-	-	-	6.5	∅0.43x0.98	-	4.1
CKM-1036-T	39.6	30.2	4.6	3.7	SAE#24	4.7	1.7	1 1/4" NPT	4.0	-	-	-	6.5	∅0.43x0.98	-	4.1
CKM-1048-T	51.4	42.0	4.6	3.7	SAE#24	4.7	1.7	1 1/4" NPT	4.0	-	-	-	6.5	∅0.43x0.98	-	4.1
CKM-1060-T	63.5	54.0	4.6	3.6	SAE#24	4.7	1.7	1 1/4" NPT	4.0	-	-	-	6.5	∅0.43x0.98	-	4.1
Typ	A	B	D	E	F	G	I	K	L	M	N	N1	O	Q	R	T
CKM-1014-F	17.6	8.2	4.6	3.6	SAE#24	4.7	-	-	4.0	3/4" NPT	1.8	0.3	6.5	∅0.43x0.98	-	4.1
CKM-1024-F	27.6	18.2	4.6	3.6	SAE#24	4.7	-	-	4.0	3/4" NPT	1.8	0.3	6.5	∅0.43x0.98	-	4.1
CKM-1036-F	39.6	30.2	4.6	3.7	SAE#24	4.7	-	-	4.0	3/4" NPT	1.8	0.3	6.5	∅0.43x0.98	-	4.1
CKM-1048-F	51.4	42.0	4.6	3.7	SAE#24	4.7	-	-	4.0	3/4" NPT	1.8	0.3	6.5	∅0.43x0.98	-	4.1
CKM-1060-F	63.5	54.0	4.6	3.6	SAE#24	4.7	-	-	4.0	3/4" NPT	1.8	0.3	6.5	∅0.43x0.98	-	4.1

All dimension in inch

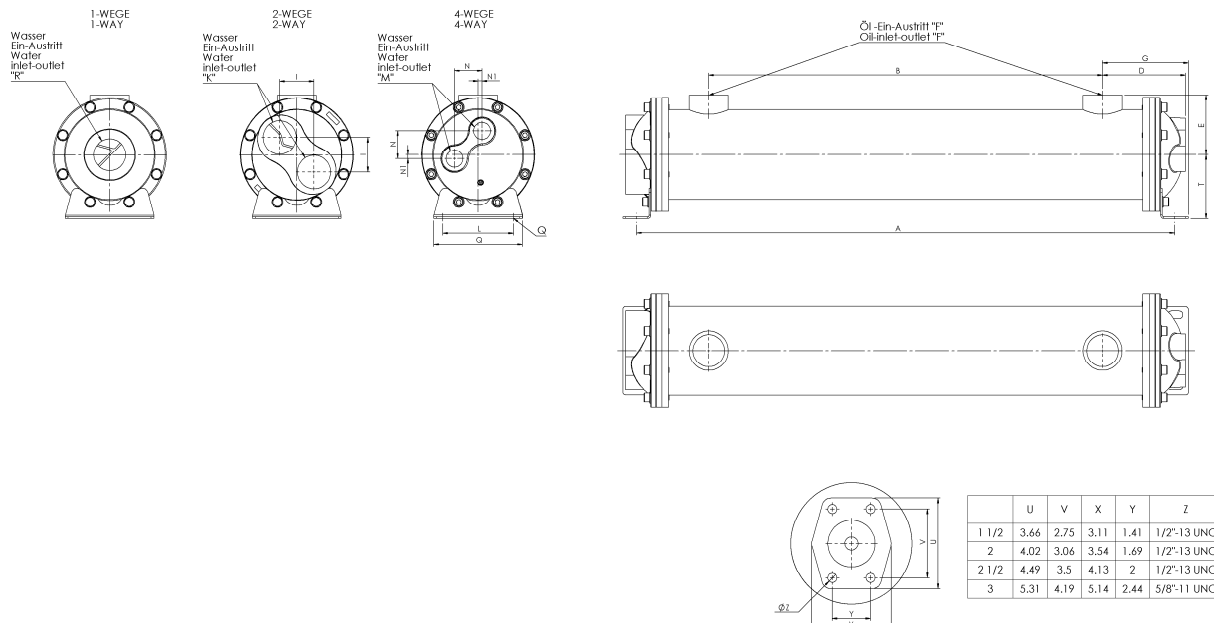


	U	V	X	Y	Z
1 1/2	3.66	2.75	3.11	1.41	1/2"-13 UNC
2	4.02	3.06	3.54	1.69	1/2"-13 UNC
2 1/2	4.49	3.5	4.13	2	1/2"-13 UNC
3	5.31	4.19	5.14	2.44	5/8"-11 UNC

Unit dimensions CKM-1200-Series

Typ	A	B	D	E	F	G	I	K	L	M	N	N1	O	Q	R	T
CKM-1224-O	26.1	15.8	5.9	4.2	2"NPT	5.1	-	-	5.0	-	-	-	6.3	Ø0.53x1.08	2"NPT	4.5
CKM-1236-O	38.1	27.8	5.9	4.2	2"NPT	5.1	-	-	5.0	-	-	-	6.3	Ø0.53x1.08	2"NPT	4.5
CKM-1248-O	50.1	39.8	5.9	4.2	2"NPT	5.1	-	-	5.0	-	-	-	6.3	Ø0.53x1.08	2"NPT	4.5
CKM-1260-O	62.1	51.9	5.9	4.2	2"NPT	5.1	-	-	5.0	-	-	-	6.3	Ø0.53x1.08	2"NPT	4.5
CKM-1272-O	74.8	63.8	5.9	4.2	2"NPT	5.1	-	-	5.0	-	-	-	6.3	Ø0.53x1.08	2"NPT	4.5
Typ	A	B	D	E	F	G	I	K	L	M	N	N1	O	Q	R	T
CKM-1224-T	26.1	15.8	5.9	4.2	2"NPT	5.1	2.4	2"NPT	5.0	-	-	-	6.3	Ø0.53x1.08	-	4.5
CKM-1236-T	38.1	27.8	5.9	4.2	2"NPT	5.1	2.4	2"NPT	5.0	-	-	-	6.3	Ø0.53x1.08	-	4.5
CKM-1248-T	50.1	39.8	5.9	4.2	2"NPT	5.1	2.4	2"NPT	5.0	-	-	-	6.3	Ø0.53x1.08	-	4.5
CKM-1260-T	62.1	51.9	5.9	4.2	2"NPT	5.1	2.4	2"NPT	5.0	-	-	-	6.3	Ø0.53x1.08	-	4.5
CKM-1272-T	74.8	63.8	5.9	4.2	2"NPT	5.1	2.4	2"NPT	5.0	-	-	-	6.3	Ø0.53x1.08	-	4.5
Typ	A	B	D	E	F	G	I	K	L	M	N	N1	O	Q	R	T
CKM-1224-F	26.1	15.8	5.9	4.2	2"NPT	5.1	-	-	5.0	1"NPT	1.9	0.3	6.3	Ø0.53x1.08	-	4.5
CKM-1236-F	38.1	27.8	5.9	4.2	2"NPT	5.1	-	-	5.0	1"NPT	1.9	0.3	6.3	Ø0.53x1.08	-	4.5
CKM-1248-F	50.1	39.8	5.9	4.2	2"NPT	5.1	-	-	5.0	1"NPT	1.9	0.3	6.3	Ø0.53x1.08	-	4.5
CKM-1260-F	62.1	51.9	5.9	4.2	2"NPT	5.1	-	-	5.0	1"NPT	1.9	0.3	6.3	Ø0.53x1.08	-	4.5
CKM-1272-F	74.8	63.8	5.9	4.2	2"NPT	5.1	-	-	5.0	1"NPT	1.9	0.3	6.3	Ø0.53x1.08	-	4.5

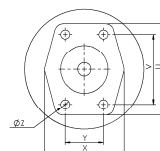
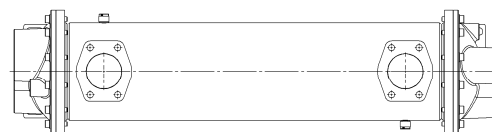
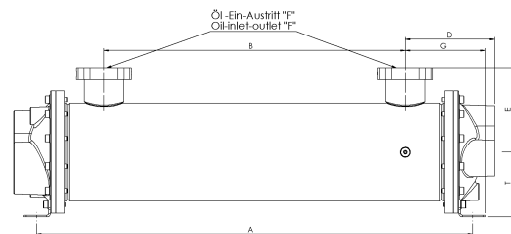
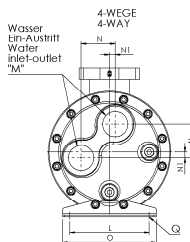
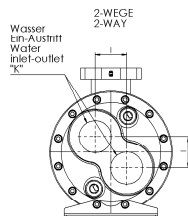
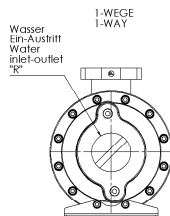
All dimension in inch



Unit dimensions CKM-1700-Series

Typ	A	B	D	E	F	G	I	K	L	M	N	N1	O	Q	R	T
CKM-1724-O	27.5	15.2	8.5	6.3	3"NPT	6.7	-	-	7.0	-	-	-	8.3	Ø 0.62x1.50	3"NPT	5.7
CKM-1736-O	39.5	27.2	8.5	6.3	3"NPT	6.7	-	-	7.0	-	-	-	8.3	Ø 0.62x1.50	3"NPT	5.7
CKM-1748-O	51.5	39.2	8.5	6.3	3"NPT	6.7	-	-	7.0	-	-	-	8.3	Ø 0.62x1.50	3"NPT	5.7
CKM-1760-O	63.5	51.2	8.5	6.3	3"NPT	6.7	-	-	7.0	-	-	-	8.3	Ø 0.62x1.50	3"NPT	5.7
CKM-1772-O	76.1	62.6	8.5	6.3	3"NPT	6.7	-	-	7.0	-	-	-	8.3	Ø 0.62x1.50	3"NPT	5.7
CKM-1784-O	88.1	74.6	8.5	6.3	3"NPT	6.7	-	-	7.0	-	-	-	8.3	Ø 0.62x1.50	3"NPT	5.7
Typ	A	B	D	E	F	G	I	K	L	M	N	N1	O	Q	R	T
CKM-1724-T	27.5	15.2	8.5	6.3	3"NPT	6.7	2.8	2 1/2"NPT	7.0	-	-	-	8.3	Ø 0.62x1.50	-	5.7
CKM-1736-T	39.5	27.2	8.5	6.3	3"NPT	6.7	2.8	2 1/2"NPT	7.0	-	-	-	8.3	Ø 0.62x1.50	-	5.7
CKM-1748-T	51.5	39.2	8.5	6.3	3"NPT	6.7	2.8	2 1/2"NPT	7.0	-	-	-	8.3	Ø 0.62x1.50	-	5.7
CKM-1760-T	63.5	51.2	8.5	6.3	3"NPT	6.7	2.8	2 1/2"NPT	7.0	-	-	-	8.3	Ø 0.62x1.50	-	5.7
CKM-1772-T	76.1	62.6	8.5	6.3	3"NPT	6.7	2.8	2 1/2"NPT	7.0	-	-	-	8.3	Ø 0.62x1.50	-	5.7
CKM-1784-T	88.1	74.6	8.5	6.3	3"NPT	6.7	2.8	2 1/2"NPT	7.0	-	-	-	8.3	Ø 0.62x1.50	-	5.7
Typ	A	B	D	E	F	G	I	K	L	M	N	N1	O	Q	R	T
CKM-1724-F	27.5	15.2	8.5	6.3	3"NPT	6.7	-	-	7.0	2"NPT	3.0	0.5	8.3	Ø 0.62x1.50	-	5.7
CKM-1736-F	39.5	27.2	8.5	6.3	3"NPT	6.7	-	-	7.0	2"NPT	3.0	0.5	8.3	Ø 0.62x1.50	-	5.7
CKM-1748-F	51.5	39.2	8.5	6.3	3"NPT	6.7	-	-	7.0	2"NPT	3.0	0.5	8.3	Ø 0.62x1.50	-	5.7
CKM-1760-F	63.5	51.2	8.5	6.3	3"NPT	6.7	-	-	7.0	2"NPT	3.0	0.5	8.3	Ø 0.62x1.50	-	5.7
CKM-1772-F	76.1	62.6	8.5	6.3	3"NPT	6.7	-	-	7.0	2"NPT	3.0	0.5	8.3	Ø 0.62x1.50	-	5.7
CKM-1784-F	88.1	74.6	8.5	6.3	3"NPT	6.7	-	-	7.0	2"NPT	3.0	0.5	8.3	Ø 0.62x1.50	-	5.7

All dimension in inch



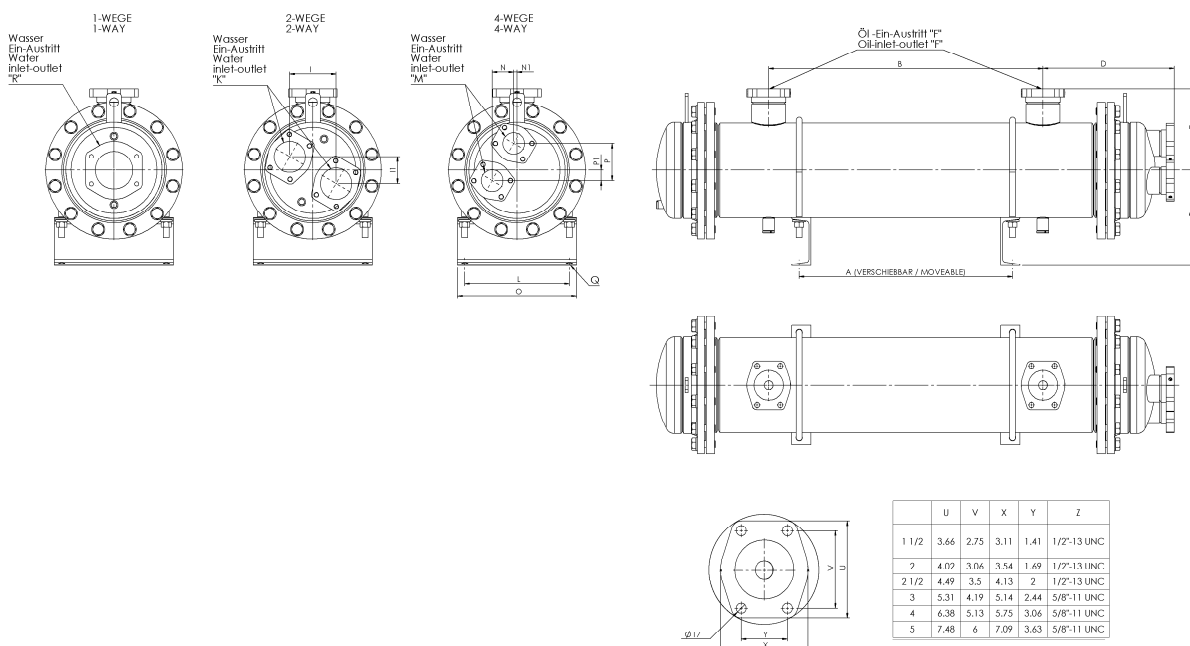
	U	V	X	Y	Z
1 1/2	3.66	2.75	3.11	1.41	1/2"-13 UNC
2	4.02	3.06	3.54	1.69	1/2"-13 UNC
2 1/2	4.49	3.5	4.13	2	1/2"-13 UNC
3	5.31	4.19	5.14	2.44	5/8"-11 UNC

Unit dimensions CKM-2400-Series

Typ	A	B	D	E	F	I	K	L	M	N	N1	O	Q	R	T
CKM-2448-O	28.3	36.3	17.4	10.8	SAE 4"	-	-	13.9	-	-	-	15.7	Ø0.86	SAE 5"	12.6
CKM-2460-O	40.3	48.3	17.4	10.8	SAE 4"	-	-	13.9	-	-	-	15.7	Ø0.86	SAE 5"	12.6
CKM-2472-O	52.3	60.4	17.4	10.8	SAE 4"	-	-	13.9	-	-	-	15.7	Ø0.86	SAE 5"	12.6
CKM-2484-O	64.3	72.4	17.4	10.8	SAE 4"	-	-	13.9	-	-	-	15.7	Ø0.86	SAE 5"	12.6
CKM-2496-O	76.3	84.3	17.4	10.8	SAE 4"	-	-	13.9	-	-	-	15.7	Ø0.86	SAE 5"	12.6
Typ	A	B	D	E	F	I	K	L	M	N	N1	O	Q	R	T
CKM-2448-T	28.3	36.3	17.4	10.8	SAE 4"	5.8	SAE 4"	13.9	-	-	-	15.7	Ø0.86	-	12.6
CKM-2460-T	40.3	48.3	17.4	10.8	SAE 4"	5.8	SAE 4"	13.9	-	-	-	15.7	Ø0.86	-	12.6
CKM-2472-T	52.3	60.4	17.4	10.8	SAE 4"	5.8	SAE 4"	13.9	-	-	-	15.7	Ø0.86	-	12.6
CKM-2484-T	64.3	72.4	17.4	10.8	SAE 4"	5.8	SAE 4"	13.9	-	-	-	15.7	Ø0.86	-	12.6
CKM-2496-T	76.3	84.3	17.4	10.8	SAE 4"	5.8	SAE 4"	13.9	-	-	-	15.7	Ø0.86	-	12.6
Typ	A	B	D	E	F	I	K	L	M	N	N1	O	Q	R	T
CKM-2448-F	28.3	36.3	17.4	10.8	SAE 4"	-	-	13.9	SAE 3"	2.9	0.4	15.7	Ø0.86	-	12.6
CKM-2460-F	40.3	48.3	17.4	10.8	SAE 4"	-	-	13.9	SAE 3"	2.9	0.4	15.7	Ø0.86	-	12.6
CKM-2472-F	52.3	60.4	17.4	10.8	SAE 4"	-	-	13.9	SAE 3"	2.9	0.4	15.7	Ø0.86	-	12.6
CKM-2484-F	64.3	72.4	17.4	10.8	SAE 4"	-	-	13.9	SAE 3"	2.9	0.4	15.7	Ø0.86	-	12.6
CKM-2496-F	76.3	84.3	17.4	10.8	SAE 4"	-	-	13.9	SAE 3"	2.9	0.4	15.7	Ø0.86	-	12.6

All dimension in inch

CKM-3000-Series and CKM-4000-Series on request



advanced quality
customized designs
made in europe and usa

Technical data

Caution: Incorrect installation can lead to damage to the cooler. For the seawater version, zinc anodes should be provided on the waterside. Exact information for the pressure resistance can be found in the respective component drawings.

Maximum operating pressure

Shell = up to 290 psi

Tubes = up to 232 psi

Operating temperature

41 - 203 °F

Maximum flow rates (gpm)

Typ	Oil Shell	Water Tubes CuNi 90/10 (CN) / Stainless steel (SS)			Max. Power (hp)
		1-Way (O)	2-Ways (T)	4-Ways (F)	
CKM-700	59.44	52.83	26.42		53.64
CKM-1000	87.18	118.88	59.44	29.06	134.10
CKM-1200	171.71	224.55	110.95	55.48	268.20
CKM-1700	317.01	409.47	198.13	99.06	670.51
CKM-2400	396.26	475.51	264.17	1585.04	1341.02
CKM-3000	554.76	1188.78	528.35	369.84	2011.53
CKM-4000	634.01	1452.95	792.52	528.35	2682.04

The technical data of this sheet is depending on the described operational conditions and individual cases. At different operational conditions and differing individual cases contact Universal Hydraulik. Technical modifications reserved. Please also pay attention to our operation manuals and maintenance documentations. In case of an order, binding dimensions can be found in the associated component drawing.

advanced quality
customized designs
made in europe and usa

Ordering code

SS - CKM R - 1036 - S - 2 - 6 - F - CN - W - SW (S:G112 - T:G114)

Complete
cooler stainless
steel

Series
abbreviation
CKM-Series

R = removable
cartridge

Unit size

Baffel-window size
(From Size 2400)
S = small window inside
the baffle
L = tall window inside
the baffle

Guide segment distance

Connection
shell side
See following
page

Connection
shell side
See following
page

End caps material
Without data = Cast iron or steel
SW = Cast iron (nickel coating
treatment)
SWBZ = Sea water resistant gun
metal end caps + zinc anode
SS = Stainless steel

Tube sheet material
Without data = Steel
W= Brass
SS = Stainless steel

Tube material
CN = Copper- nickel
CU = Copper
SS = Stainless steel
TI = Titan

Cooling water connection system
O = 1-Way
T = 2-Ways
F = 4-Ways

Tube diameter
12 mm = 7
10 mm = 6
6.4 mm = 4

advanced quality
customized designs
made in europe and usa

Connection designation

CKM-1036-2-6-F-CN (S:G112 - T:G114)

Type code acc. UH-data sheet
(see previous page)

Connection type and
connection size,
shell side

Connection type and
connection size,
tube side

Connection table

G BSPP-thread:	N NPT- thread:	# SAE-Port mit UNF:	S SAE-flange:
G 1/8" = G18	1/8" NPT = N18	7/16-20 UNF = #4	3/4" -3000psi = S34
G 1/4" = G14	1/4" NPT = N14	1/2-20 UNF = #5	1" -3000psi = S1
G 3/8" = G38	3/8" NPT = N38	9/16-18 UNF = #6	1 1/4" -3000psi = S114
G 1/2" = G12	1/2" NPT = N12	3/4-16 UNF = #8	1 1/2" -3000psi = S112
G 3/4" = G34	3/4" NPT = N34	7/8-14 UNF = #10	2" -3000psi = S2
G 1" = G1	1" NPT = N1	1 1/16-12 UNF = #12	2 1/2" -3000psi = S212
G 1 1/4" = G114	1 1/4" NPT = N114	1 3/16-12 UNF = #14	3" -3000psi = S3
G 1 1/2" = G112	1 1/2" NPT = N112	1 5/16-12 UNF = #16	4" -3000psi = S4
G 2" = G2	2" NPT = N2	1 5/8-12 UNF = #20	5" -3000psi = S5
		1 7/8-12 UNF = #24	
		2 1/2-12 UNF = #32	
D DIN- flange:	D DIN- flange:	A ANSI- flange:	A ANSI- flange:
DN20/PN16 = D20/16	DN20/PN40 = D20/40	1/2" -150lbs = A12/15	1/2" -300lbs = A12/3
DN25/PN16 = D25/16	DN25/PN40 = D25/40	3/4" -150lbs = A34/15	3/4" -300lbs = A34/3
DN32/PN16 = D32/16	DN32/PN40 = D32/40	1" -150lbs = A1/15	1" -300lbs = A1/3
DN40/PN16 = D40/16	DN40/PN40 = D40/40	1 1/4" -150lbs = A114/15	1 1/4" -300lbs = A114/3
DN50/PN16 = D50/16	DN50/PN40 = D50/40	1 1/2" -150lbs = A112/15	1 1/2" -300lbs = A112/3
DN65/PN16 = D65/16	DN65/PN40 = D65/40	2" -150lbs = A2/15	2" -300lbs = A2/3
DN80/PN16 = D80/16	DN80/PN40 = D80/40	2 1/2" -150lbs = A212/15	2 1/2" -300lbs = A212/3
DN100/PN16 = D100/16	DN100/PN40 = D100/40	3" -150lbs = A3/15	3" -300lbs = A3/3
DN125/PN16 = D125/16	DN125/PN40 = D125/40	4" -150lbs = A4/15	4" -300lbs = A4/3
DN150/PN16 = D150/16	DN150/PN40 = D150/40	5" -150lbs = A5/15	5" -300lbs = A5/3
DN200/PN16 = D200/16	DN200/PN40 = D200/40		

Sales

Universal Hydraulik GmbH
Siemensstr. 33. D-61267 Neu-Anspach
Tel.: +49 (0) 60 81/ 9418- 0. Fax +49 (0) 60 81/ 94 18 49
E-Mail: info@universalhydraulik.com
www.universalhydraulik.com

Universal Hydraulik USA, Corp.
Fort Meigs Business Center. 25651 Fort Meigs Road, Suite A
Perrysburg, OH 43551
Phone: 419 873 63 40. Fax: 419 873 63 42
email: info@universalhydraulik.com
www.universalhydraulik-usa.com